



**SATURDAY, SEPTEMBER 2, 2023**

10:30 AM EST | at the farm | Modoc, Indiana

# STAR SEARCH XXI SALE

SATURDAY  
SEPTEMBER 2, 2023

10:30 AM EST  
at the farm  
Modoc, Indiana


Entrance to parking is located at the intersection of US  
36 and Indian Trail Road. It is 200 yards west of sale site.



Tyler, 765.576.0035 | Cortney, 410.707.0267  
Kyle & Lauren Shoufler, 317.650.7999  
Brian & Angie, 765.969.0373  
Randy & Janet, 765.853.5819 | Tanner Cates  
7893 South Indian Trail, Modoc, IN 47358  
[www.catesfarms.com](http://www.catesfarms.com)



Cortney Hill-Dukehart Cates, 410.707.0267  
Tyler Cates, 765.576.0035  
Kyle Shoufler, 317.650.7999  
Bob Hill & Marlene Dukehart  
7893 South Indian Trail, Modoc, IN

Like us on ... 

## SCHEDULE OF EVENTS

### FRIDAY, SEPTEMBER 1ST

6:00 pm View the cattle and enjoy a meal  
& fellowship with the Cates families

RC Cattle Open House  
[www.SCONlinesales.com](http://www.SCONlinesales.com)  
Cattle available Friday - Sunday

Smith Family Farms Cattleman's Cut  
Open House - Cattle available Friday - Sunday

### SATURDAY, SEPTEMBER 2ND

10:30 am Cates Farms Star Search XXI  
Shorthorn Production Sale

Lunch will be provided by Graze On Catering

4:00 pm Smith Family Farms Cattleman's Cut  
Open House - Cattle available Friday - Sunday

6:30 pm Cornerstone Farms Born To Be Rock Stars  
Volume IV Sale, Winchester, IN

6:30 pm Indiana Fall Classic Sale

RC Cattle Open House  
[www.SCONlinesales.com](http://www.SCONlinesales.com)  
Cattle available Friday - Sunday

WATCH & BID LIVE ONLINE  
CCI.LIVE



## SALE DAY PHONES

Brian 765.969.0373  
Randy 765.914.1504  
Cortney 410.707.0267

## SALE ACCOMMODATIONS

Randolph Inn & Suites  
765.584.8281 Winchester, IN

Holiday Inn  
765.488.1975 Richmond, IN

Hampton Inn & Suites  
765.966.5200 Richmond, IN

## AUCTIONEER

Cody Lowderman 309.313.2171

## SALE MANAGERS

Aegerter Marketing Services, Inc.  
Jeff K. Aegerter 402.641.4696  
[jeff.aegerter@gmail.com](mailto:jeff.aegerter@gmail.com)  
[www.aegertermarketing.com](http://www.aegertermarketing.com)

Cagwin Cattle Services, Inc.,  
Don Cagwin  
217.452.3051 or 217.341.7552  
FAX: 217.452.3053  
[cagwincattle@casscomm.com](mailto:cagwincattle@casscomm.com)  
Cindy Cagwin-Johnston, 217.452.3056

Sears Marketing Services  
Alan K. Sears 970.396.7521 or 970.454.3986  
[alan.sears@aksears.com](mailto:alan.sears@aksears.com)  
[searsmarketingservices.com](http://searsmarketingservices.com)

## LIVESTOCK REPRESENTATIVES

Kent Jaecke, Special Representative  
405.408.2440

Darryl Rahn, *Shorthorn Country*  
217.473.1124

Montie Soules, ASA Executive Secretary/Treasurer  
918.645.4322

Stuart Wilson, Sale Consultant  
217.454.9355

Scott Trennepohl, Sale Consultant  
765.620.1700

Jason Smith, Sale Consultant  
256.338.0023

Jeremey Hagg, Sale Consultant  
406.833.0117

## INSURANCE

Cindy Cagwin-Johnston, 217.452.3056

## THANK YOU

Thank you to Tanner Cates, Kyle Shoufler, Lauren Shoufler, Brad Johnson, Britany Blankinship, Colby Manning, Ryan Holaway and Carter Meyer for making our cattle on sale day look great.

Photos taken by Cortney Cates, Kyle Shoufler and Cindy Cagwin-Johnston.

# '22 AMERICAN ANGUS ASSOC.

## Show Heifer of the Year

### SSF LADY 5030

- 2021 Atlantic National Junior Show Grand Champion Female
- 2021 Atlantic National Open Show Grand Champion Female
- 2021 All-American Breeders' Futurity Junior Show Grand Champion Female
- 2021 All-American Breeders' Futurity Open show Grand Champion Female
- 2021 American Royal Junior Show Grand Champion Female
- 2021 NAILE Junior Show Reserve Grand Champion Female

- 2021 NAILE Open Show Reserve Grand Champion Female
- 2022 Cattlemen's Congress Junior Show Grand Champion Female
- 2022 Fort Worth Stock Show Reserve Grand Champion Female
- 2022 All-American Breeders' Futurity Supreme Champion Female
- 2022 NJAS Grand Champion Cow/ Calf Pair

Congratulations Houston Ferree



# OUR SHOW HEIFERS *Make Cows!*



## SSF LADY 5030

- '21 Atlantic National Junior & Open Shows Grand Champion Female
  - '21 All-American Breeders' Futurity Junior & Open Show Grand Champion Female
  - '21 American Royal Junior Show Grand Champion Female
  - '21 NAILE Junior & Open Show Reserve Grand Champion Female
  - '22 Cattlemen's Congress Junior Show Grand Champion Female
  - '22 Fort Worth Stock Show Reserve Grand Champion Female
  - '22 All-American Breeders' Futurity Supreme Champion Female
  - '22 NJAS Grand Champion Cow/ Calf Pair
- Congratulations Houston Ferree

## SSF PROVEN QUEEN 5029

- '20 NJAS Division Champion
  - '20 Cattlemen's Classic Division Champion
  - '20 American Royal Division Champion
  - '20 NWSS Division Champion
  - '20 Atlantic National Division Champion
  - '20 NAILE Reserve Division Champion
  - '21 Atlantic Nationals Champion Cow/ Calf Pair
- Congratulations Sara Sullivan

## SSF BARDOT 3268

- '19 NJAS Third Overall Grand Champion Female
  - '19 NWSS Reserve Division Champion
  - '20 NJAS Reserve Champion Cow/ Calf Pair
- Congratulations Jake Nikkel



## SSF DS LADY 2262

- Grand Champion Female, '23 Atlantic National Junior Show
  - Third Overall Champion Female, '23 Atlantic National Open Show
  - Grand and Supreme Overall Female, '23 All-American Angus Breeders' Futurity Jr show
  - Division Champion, '23 NJAS
- Congratulations Kelly Spicer

## SSF ENVIOUS BLACKBIRD 5022

- Fourth Overall Champion Female, '23 Atlantic Nationals Open Show & Division Champion, Jr Show
  - Third Overall Champion Female, '23 All-American Angus Breeders' Futurity Open Show
  - Division Champion, '23 All-American Angus Breeders' Futurity Junior Show
  - Division Champion, '23 NJAS
- Congratulations Samantha Van Vorhis



## SSF LADY 3102

- Division Champion Female, KILE
  - Third Overall Angus Female, PAYLE
  - Third Overall Angus Female, Southeast PA Jackpot, Ring A
  - Calf Champion, PA Farm Show
  - Champion Angus & Third Overall Female, Black Tie Affair
- Congratulations Karli Berkeimer



## HAGG BLACK CROW

- Grand Champion Angus Bull, '22 NAILE
- Owned with Winegardner/ Klingaman & Haggard Angus

## SSF PROVEN QUEEN 5182

- Reserve Champion Heifer, Ohio Angus Preview Show
- Congratulations Ray Beneker

## SSF DS LADY 4191

- Reserve Grand Champion Female, '22 Keystone
  - Reserve Division Champion, '22 American Royal
  - Reserve Champion Angus Female & Fifth Overall Champion, '22 Ohio Beef Expo
- Congratulations Samantha Van Vorhis

## SSF SANDY 0252

- Reserve Grand Champion Bred & Owned Female, '23 All-American Angus Breeders Futurity
  - Fourth Overall Bred & Owned Female, '23 Atlantic National
- Congratulations Piper Cates



LOT 40A



LOT 40B

## 40A SSF DS LADY 1253

Heifer | +20698759 | Polled | Black | 01.25.2023 | 1253

SSF ON POINT 4028	COLBURN PRIMO 5153	<u>BEPD</u> 2.5
	PLUM CREEK ANNIE LU 4472	<u>WEPD</u> 53
	DAMERON FIRST IMPRESSION	<u>YEPD</u> 90
SSF LADY IMPRESSION O265	COPPER CRK LADY LUT 1120	<u>MEPD</u> 19

The Lady Impression cow continues to consistently produce at the very highest level. Our On Point calves continue to be my favorite sire group because they are so flawlessly designed in their movement and structural design. This female is very broody all the while being stout and genuine all the way through and can get out and go with any of them. This is a nationally competitive female.

## 40B SSF DS LADY 3023

Heifer | 20698761 | Polled | Black | 03.02.2023 | 3023

SSF ON POINT 4028	COLBURN PRIMO 5153	<u>BEPD</u> 2.5
	PLUM CREEK ANNIE LU	<u>WEPD</u> 53
	DAMERON FIRST IMPRESSION	<u>YEPD</u> 90
SSF LADY IMPRESSION	COPPER CRK LADY LUUT 1120	<u>MEPD</u> 19

This one rates pretty darn high with me. She has the same flawless structural design as her sister, but with a touch more size and length. This one can compete at the very highest level and will be hard to fault. She has a very nice hair coat and great feet. Neither the Lady Impression cow nor On Point ever needed their feet trimmed. That is a rarity unfortunately.

ANGUS ANGUS ANGUS ANGUS ANGUS ANGUS ANGUS ANGUS ANGUS ANGUS ANGUS ANGUS

# LADY IMPRESSION FAMILY



**41 SSF DS LADY 1183**  
 Heifer | +20698758 | Polled | Black | 01.18.2023 | 1183

CONLEY NO LIMIT	EXAR BLUE CHIP 1877B	<b>BEPD</b> 2.6
	SILVEIRAS S SIS SANDY 2355	<b>WEPD</b> 57
	DAMERON FIRST IMPRESSION	<b>YEPD</b> 91
SSF LADY IMPRESSION O265	COPPER CRK LADY LUT 1120	<b>MEPD</b> 19

This is a full sister to the female campaigned last year by Samantha Vanvorhis that was always very competitive. This full sister has the same fault free design but is a touch cleaner and more extended through her front end at this age.

**41A 4 SEXED HEIFER EMBRYOS**  
 Selling one package of four Sexed Heifer embryos.

CONLEY NO LIMIT X SSF LADY IMPRESSION O265



**42 SSF DS LADY 2063**  
 Heifer | +20698760 | Polled | Black | 02.06.2023 | 2063

BNWZ DIGNITY 8017	PVF INSIGHT 0129	<b>BEPD</b> 1.9
	CCC SARA'S DREAM 5116	<b>WEPD</b> 57
	DAMERON FIRST IMPRESSION	<b>YEPD</b> 97
SSF LADY IMPRESSION O265	COPPER CRK LADY LUT 1120	<b>MEPD</b> 21

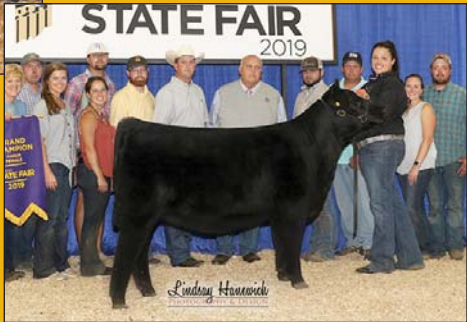
The Dignity cattle have steadily been growing in popularity in the breed. There were many folks at Junior Nationals that identified them as their favorite new sire group. This female has a bit more size and skeletal extension than some out of this cow. I think people will like this one.

## LADY IMPRESSION Champions



SSF DS Lady 2262, Grand Champion Female, '23 Atlantice National Junior Show; Third Overall Champion Female, '23 Atlantic National Open Show; Grand & Supreme Overall Female, '23 All-American Angus Breeders' Futurity Jr show; Division Champion, '23 NJAS, Shown by Kelly Spicer

SSF LADY 5030, '21 Atlantic National Junior & Open Shows Grand Champion Female; '21 All-American Breeders' Futurity Junior & Open Show Grand Champion Female; '21 American Royal Junior Show Grand Champion Female; '21 NAILE Junior & Open Show Reserve Grand Champion Female; '22 Cattlemen's Congress Junior Show Grand Champion Female; '22 Fort Worth Stock Show Reserve Grand Champion Female; '22 All-American Breeders' Futurity Supreme Champion Female and '22 NJAS Grand Champion Cow/ Calf Pair, Shown by Houston Ferree



SSF Lady 0138, Supreme Champion Female, '19 Indiana State Fair Open Show, Shown by Katie Brock

**43A**

**SSF FF LADY 3083**

Heifer | +20698762 | Polled | Black | 03.08.2023 | 3083

**43B**

**SSF LADY 4062**

Bred | +20698764 | Polled | Black | 04.06.2022 | 4062

CONLEY EXPRESS 7211	SMWATCHOUT 482	<u>BEPD</u> 2.8
	DPL SANDY 3040	<u>WEPD</u> 57
SSF LADY IMPRESSION O265	DAMERON FIRST IMPRESSION	<u>YEPD</u> 95
	COPPER RK LADY LUT 120	<u>MEPD</u> 22

LOT 43A - This is a full sister to the 5030 female that was Show Heifer of the Year for Houston Ferree. This heifer is wide chested, bold ribbed and shapely from behind. I love the way she is designed out of her hip and hind leg.

LOT 43B - Bred to Conley Turning Point; due February/ March 2024.

This is another full sister to the show heifer of the year 5030. This female is extremely clean and extended up front and has extra muscle shape.



LOT 43A

**43C**

**4 SEXED HEIFER EMBRYOS**

Selling one package of four Sexed Heifer embryos.

EXPRESS X SSF LADY IMPRESSION O265

**43D**

**SSFHAG LADY PRIMO 3213 SDF**

Heifer | +20702970 | Polled | Black | 03.23.2023 | 3213

COLBURN PRIMO 5153	DAMERON FIRST CLASS	<u>BEPD</u> 3.5
	SILVEIRAS SARAS DREAM 1339	<u>WEPD</u> 56
COPPER CRK LADY 1241	EXAR LUTTON 1831	<u>YEPD</u> 93
	CHERRY KNOLL LADY LOLA	<u>MEPD</u> 16



LOT 43D



SSF Lady Impression, Grand Champion Female, '17 Atlantic National, Shown by Kallie Knott



SSF DS Lady 4301, Reserve Grand Champion Female, All-American Angus Breeders Futurity, Shown by Anderson Pender



SSF DS LADY 4191, Reserve Grand Champion Female, Keystone; Reserve Division Champion, American Royal; Reserve Champion Angus Female and Fifth Overall Champion, Ohio Beef Expo, Shown by Samantha Van Vorhis



**44** **SSF LADY 4302**  
 Bred | +20397331 | Polled | Black | 04.30.2022 | 4302

SCC SCH 24 KARAT 838	SCC TRADITION OF 24	<u>BEPD</u> 3.2
	FCF PROVEN QUEEN 419	<u>WEPD</u> 56
	DAMERON FIRST IMPRESSION	<u>YEPD</u> 92
SSF LADY IMPRESSION O265	COPPER RK LADY LUT 120	<u>MEPD</u> 26

Bred to SEXED HEIFER PVF Surveillance semen; due February 18, 2024

We think this is definitely one of the best quality breeds we have ever sold. We actually sold her last year as a show heifer but turns out she stopped being a fan of the blower. We think this one has tremendous generating potential and still looks like she could go straight in the show ring.



**45** **CONLEY S SIS SANDY 4313**  
 Bred | +\*17908018 | Polled | Black | 04.15.2014 | 4313

SILVEIRAS STYLE 9303	GAMBLES HOT ROD	<u>BEPD</u> 4.2
	SILVEIRAS ELBA 2520	<u>WEPD</u> 47
	BC LOOKOUT 7024	<u>YEPD</u> 77
K N C CABIN CREEK SANDY 804	K N C CABIN CREEK SANDY	<u>MEPD</u> 15

Bred to SEXED HEIFER PVF Blacklist semen; due December 1, 2023.

Selling half interest; Conley Cattle and SSF will each retain 1/4 interest. Buyer can double the hammer price and own all of her.

This female was the biggest purchase that Cortney and I had ever made financially when we Purchased half interest in her at Conley's. It was an investment that certainly paid off as her first daughter we sold brought more than twice what we gave for the cow. This female is a very consistent egg producer and has allowed us to build a very nice bank of eggs on her. She looks like an impressive six-year-old female and still breeds AI the first time, every time. We feel the two 24 Karat heifer calves out of her in this sale are absolutely outstanding. She averages six eggs per IVF cycle and did 10 her last time flushed. This female is far from done generating. She is due early with a heifer calf, then you will be off to the races bringing in revenue with her just like we were.



**45A**

**SSF SANDY 2163**

Heifer | +20700178 | Polled | Black | 02.16.2023 | 2163

SCC SCH 24 KARAT 838	SCC TRADITION OF 24	<u>BEPD</u> 4.8
	FCF PROVEN QUEEN 419	<u>WEPD</u> 54
	SILVEIRAS STYLE 9303	<u>YEPD</u> 88
CONLEY S SIS SANDY 4313	K N C CABIN CREEK SANDY	<u>MEPD</u> 21

This one has the extras that are needed and desired in the Angus show arena today. This female is so attractive in her front one third and from the side with tremendous depth of body. She has an incredible coat of hair and she and her sister are as good natured as any heifers in the sale. This one gets noticed first by most time after time.



**45B**

**SSF SANDY 4093**

Heifer | +20700179 | Polled | Black | 04.09.2023 | 4093

SCC SCH 24 KARAT 838	SCC TRADITION OF 24	<u>BEPD</u> 4.8
	FCF PROVEN QUEEN 419	<u>WEPD</u> 54
	SILVEIRAS STYLE 9303	<u>YEPD</u> 88
CONLEY S SIS SANDY 4313	K N C CABIN CREEK SANDY	<u>MEPD</u> 21

This female, like her sister has been a standout since birth. She has the same incredible look that makes her stand out and causes people to take notice. I think it will be interesting to see as we get closer to the sale which of these two sisters' folks like the best as this one matures and catches up. Both of them have quality to spare.



**45C**

**SSF SANDY N071**

Heifer | +20701957 | Polled | Black | 11.07.2021 | N071

EXAR BLUE CHIP 1877B	DAMERON FIRST CLASS	<u>BEPD</u> 4.8
	GREENS PRINCESS 1012	<u>WEPD</u> 60
	SILVEIRAS STYLE 9303	<u>YEPD</u> 96
CONLEY S SIS SANDY 9303	K N C CABIN CREEK SANDY 804	<u>MEPD</u> 14

Bred to SEXED HEIFER PVF Surveillance semen.  
 This is a powerhouse bred female. This female has always been impressive and shown added stoutness and dimension. She offers a great popular pedigree to go with her quality. Her first calf could reap great rewards.





**45D SSF SANDY 2322**  
 Bred | +20698712 | Polled | Black | 02.03.2022 | 2322

5T POWER CHIP 4790	EXAR BLUE CHIP 1877B	<u>BEPD</u> 2.6
	5T MISS WIX 8002	<u>WEPD</u> 54
CONLEY S SIS SANDY 4313	SILVEIRAS STYLE 9303	<u>YEPD</u> 87
	K N C CABIN CREEK SANDY 804	<u>MEPD</u> 17

Bred to SEXED HEIFER PVF Surveillance semen.  
 This is a very feminine attractive daughter of the popular Power Chip bull. When you go to sell your calves and they stem from the Sandy cow family, it is most certainly an added bonus to buyers.



**46 SSF NELLIE GIRL 3027**  
 Bred | \*18836875 | Polled | Black | 03.02.2017 | 3027

SMA WATCHOUT 482	SILVEIRAS WATCHOUT O514	<u>BEPD</u> 4.8
	2K BEAUTY 961	<u>WEPD</u> 54
SSF NELLIE GIRL 3105	OSU CLASS ACT	<u>YEPD</u> 88
	SCC NELLIE GIRL 980	<u>MEPD</u> 21

Bred to SEXED HEIFER SSF On Point semen; due February 15, 2024.  
 3027 was one of the first very successful show heifers we produced. Shown by Kallie Knott. She was Reserve Supreme Champion female at the Hoosier Beef Congress, Grand champion Angus Female at the Keystone ROV show, Reserve division champion in Louisville as both a calf and a yearling and was reserve in her division at Junior Nationals. Her first calf commanded \$30,000 and was campaigned very successfully by the Mool family. This female has bred AI to sexed semen every year the first time and usually moves up in calving dates. She has a tremendous udder as well and an easy-going demeanor. She has certainly proven now, with the tremendous heifer calf at side this year, she is definitely a future donor cow.

**46A** **SSF NELLIE GIRL 3193**  
 Heifer | 20698763 | Polled | Black | 03.19.2023 | 3193

SSF ON POINT 4028	COLBURN PRIMO 5153	<u>BEPD</u> 4.3
	PLUM CREEK ANNIE LU 4472	<u>WEPD</u> 56
SSSF NELLIE GIRL 3027	SMA WATCHOUT 482	<u>YEPD</u> 99
	SSF NELLIE GIRL 3105	<u>MEPD</u> 15

This is the longest necked, best fronted Angus heifer in the offering. She still is very deep and sweeping through her rib cage. This heifer's picture has been used in a lot of our advertising. She is striking.



**47** **SSF DS NELLIE GIRL 4273**  
 Heifer | 20698495 | Polled | Black | 04.27.2023 | 4273

M C SSF NIGHT SKY 9088	S&R ROUNDTABLE J328	<u>BEPD</u> 3.2
	M C BLACKCAP 6085	<u>WEPD</u> 66
SSF NELLIE GIRL 229	SMA WATCHOUT 482	<u>YEPD</u> 114
	SSF NELLIE GIRL 3105	<u>MEPD</u> 20

This female is bred very similar to the heifer Piper is showing that was Reserve Bred and Owned champion at Angus Futurity and fourth overall at Atlantic Nationals. This heifer is phenomenal in her structure and basic outline. We think this one will only continue to get better with time.



**48** **SSF LADY N171**  
 Bred | 20309746 | Polled | Black | 11.17.2021 | N171

TOP LINE SENSATIONAL 9001	S A V SENSATION 5615	<u>BEPD</u> 3.2
	TOP LINE LADY 9111	<u>WEPD</u> 66
TOP LINE LADY 7003	DAMERON FIRST CLASS	<u>YEPD</u> 114
	GAMBLES LADY 959	<u>MEPD</u> 20

Bred to Conley Turning Point; due 04.01.2024.

This is an incredibly stout designed and loose made daughter of Sensational. She has so much dimension and width, yet is incredible on her feet and legs.



# SARAS DREAM FAMILY



**49 SILVEIRAS HARAS DREAM 8532**  
 Bred | +\*19401226 | Polled | Black | 12.08.2018 | 8532

DAMERON FIRST CLASS	EXAR RS FIRST RATE S903 R3	BEPD 2.6
	DAMERON NORTHERN MISS 3114	WEPD 54
SILVEIRAS SARAS DREAM	SILVEIRAS STYLE 9303	YEPD 87
	EXG SARAS DREAM S609 R3	MEPD 17

Bred to SEXED HEIFER PVF Insight semen; due January 1, 2024.

This is a full sister to Primo and the 5116 donor of Nowatzke's to just name a few. We purchased half interest in this female as lot 1 in Silveiras sale. She has IVF'd very well for us and we have a nice collection of eggs built up. This female will blow you away with her structural integrity and overall functional build. This is a tremendous opportunity to buy a proven donor just entering her prime producing years, with a pedigree stacked with household names.



**50 SSF SARAS DREAM 5033**  
 Heifer | +20700156 | Polled | Black | 05.03.2023 | 5033

SCC SCH 24 KARAT 838	SCC TRADITION OF 24	BEPD
	FCF PROVEN QUEEN 419	WEPD
SILVEIRAS HARAS DREAM 8532	DAMERON FIRST CLASS	YEPD
	SILVEIRAS SARAS DREAM	MEPD

We feel very fortunate to have a large collection of eggs in the tank that are full sibs to this fancy young female. This is current, popular genetics at its finest. This heifer has the elegance and quality to withstand a lot of competition.

## GENERAL INFORMATION

**Feeding & Showing Terms:** We pride ourselves in the professional way we exhibit your purchases. Here, at Cates Farms, we employ some of the best fitters in the business at both the farm and the shows. We spare no expenses to exhibit your cattle to ensure your success. The charges below are not designed for us to make money, rather to insure we can continue to offer the best service to you. Each animal that will be located at Cates Farms show barn will be charged \$25/day. Each animal will be charged \$250/day while attending shows with Cates Farms crew. This will cover all expenses while at shows. All animals must be insured while in our care/possession. Any veterinary expense above routine will be owners obligation. All accounts will be billed monthly.

**Breeding Update/Calving Information:** There will be added information available at the sale site that will list any additions to the catalog information as to new calves born and new breeding information that will occur after the printing of this catalog.

**Half Interest Females:** The owner will own 100% of the animal. Cates Farms will get 1/2 of the embryos from each flush. Semen on all of our bulls will be available. Cost will be split.

**Breeding Guarantee:** All cattle sell under the Standard Breeding Guarantee recommended by the American Shorthorn Association. An exception would be through mishandling either obesity or under nourishment and illegal practices associated with showing the female.

**Registration & Transfer:** All animals sell with completed pedigrees or applications for registration.



**51**

## SSF PROVEN QUEEN 4193

Heifer | +20698494 | Polled | Black | 04.19.2023 | 4193

SCC SCH 24 KARAT 838	SCC TRADITION OF 24	BEPD 4.2
	FCF PROVEN QUEEN 419	WEPD 52
	DAMERON FIRST CLASS	YEPD 85
DAMERON PROVEN QUEEN 333	PVF PROVEN QUEEN 602	MEPD 21

This Proven Queen cow just continues to produce some of our best every year. This female does so many things right to a very high degree. She is the biggest footed female in the whole offering and has more muscle shape than any other. She has all that ruggedness and power yet is balanced and graceful on the move. This heifer has the parts and pieces to be very special.

# PROVEN QUEEN *Champions*



SSF Proven Queen 3029, Grand Champion Female, '21 Indiana Preview Show, Shown by Skylar Bennet



SSF Proven Queen, Division Champion, '19 NAILE, Shown by Sara Sullivan



SSF Proven Queen 2258, many time Top Five Female and Champion Angus, Shown by Raliegth Doerstler



SSF Proven Queen 5029, Division Champion, '21 Atlantic Nationals, '21 Cattlemen's Classic and '20 NWSS, NJAS and American Royal Shown by Sara Sullivan

# PROVEN QUEEN FAMILY



LOT 52A

**52A** **SSF PROVEN QUEEN 3163**  
 Heifer | +20701956 | Polled | Black | 03.16.2023 | 3163

**52B** **SSF PROVEN QUEEN 9271**  
 Bred | +20698765 | Polled | Black | 09.27.2021 | 9271

SILVEIRAS STYLE 9303	GAMBLES HOT ROD	<u>BEPD</u> 2.9
	SILVEIRAS ELBA 2520	<u>WEPD</u> 44
	DAMERON FIRST CLASS	<u>YEPD</u> 74
DAMERON PROVEN QUEEN 333	PVF PROVEN QUEEN 602	<u>MEPD</u> 14

LOT 52B - This is a very extended and beautiful profiling female that is very nice structurally. She should follow nicely in her sisters footsteps

LOT 52B - Bred to SEXED HEIFER PVF Blacklist semen; due January 2, 2024. This bred heifer looks like a brood cow already. She is a big, long, and powerful beast. She is a full sister to so many successful females we have had before her, and her mating to Blacklist sexed semen could produce the highest dollar calf out of any.



LOT 52B

**53** **P3CC MAMMA'S GIRL**  
 Bred | 20454275 | Polled | Black | 09.12.2021 | 9121

FCF LEVERAGE 641	EXAR BLUE CHIP 1877B	<u>BEPD</u> -
	FCF PROVEN QUEEN 022	<u>WEPD</u> -
	SILVEIRAS STYLE 9303	<u>YEPD</u> -
SSF PROVEN QUEEN 2258	DAMERON PROVEN QUEEN 333	<u>MEPD</u> -

Bred to SEXED HEIFER PVF Surveillance semen.

This female is a double bred Proven Queen and a double bred First Class. There is no other bred heifer in this sale that is easier doing and lower maintenance than this female. She will be a beautiful two-year-old.



LOT 53

**54** **P3CC PROVEN QUEEN LOVELY LAD**  
 Bred | +20342916 | Polled | Black | 10.08.2021 | 1081

WB PENDLETON 708 PVF SWSN	DAMERON BEST IN CLASS	<u>BEPD</u> 3.7
	WB PVF SF LUCY 4033	<u>WEPD</u> 53
	DAMERON P V F RAPTOR 702	<u>YEPD</u> 90
FCF PROVEN QUEEN 022	FCF SCC PVF PROVEN QUEEN 615	<u>MEPD</u> 26

Bred to Conley Turing Point; due February 16, 2024.

Here is a Pendleton daughter of the very popular 022 donor of Four Corners. We are actually keeping a full sister to this female with hopes she will become our next young donor cow.

# ENVIOUS BLACKBIRD FAMILY

## 55 SSF ENVIOUS BLACKBIRD 2243

Heifer | +20698711 | Polled | Black | 02.24.2023 | 2243

COLBURN PRIMO 5153	DAMERON FIRST CLASS	<b>BEPD</b> 4.2
	SILVEIRAS SARAS DREAM 1339	<b>WEPD</b> 52
		<b>YEPD</b> 85
EXAR ENVIOUS BLACKBIRD 5983	PVF INSIGHT 0129	<b>MEPD</b> 21
	EXAR ENVIOUS BLACKBIRD 1760	

This is a full sister to the very popular May heifer that is being shown by Samantha Vanvorhis that just won her division at Junior Nationals. This is probably the most opened up and powerfully built angus heifer in the offering. What I love about her is that even with all that width, her neck attachment is as good as any and she moves off of an incredible hip and hind leg. I have to think this one will be popular.



## 55A 4 SEXED HEIFER EMBRYOS

Selling one package of four Sexed Heifer embryos.

SSF ON POINT X EXAR ENVIOUS BLACKBIRD 5983

SSF Envous Blackbird 5022, Fourth Overall Champion Female, '23 Atlantic Nationals Open Show & Division Champion, Jr Show; Third Overall Champion Female, '23 All-American Angus Breeders' Futurity Open Show Division Champion, '23 All-American Angus Breeders' Futurity Junior Show; and Division Champion, '23 NJAS, Shown by congratulations Samantha Van Vorhis.



Hagg Black Crow, Grand Champion Angus Bull, '22 NAILE, Owned with Winegardner/ Klingaman & Haggard Angus, and full sib to Lot 55A.

## 56 MRV BLACKBIRD 0503

Bred | 20704654 | Polled | Black | 05.03.2022 | 0503M

SCC SCH 24 KARAT 838	SCC TRADITION OF 24	<b>BEPD</b> 4.7
	FCF PROVEN QUEEN 419	<b>WEPD</b> 56
	COLBURN PRIMO 5153	<b>YEPD</b> 94
SSF BLACKBIRD 4269	SSF BLACKBIRD HORIZON 3254	<b>MEPD</b> 23

Bred to BMW Mr Driving 80 405H ET (2021 Cattlemen's Congress Grand Champion Main Angus bull); due 03.12.2024.

Here is a 24 Karat out of one of our favorite heifers we have sold, shown successfully by Marcus VanVorhis. Marcus was our first Angus buyer and showman when we were just getting started and his family has stayed loyal to us each and every year. They have assembled a group of Angus cows that anyone would be envious of.



Dam of Lot 56, SSF Blackbird 4269



**57 P3CC SKY'S THE LIMIT**  
 Bred | 20454274 | Polled | Black | 04.13.2022 | 4132

PVF INSIGHT 0129	S A V BRILLIANCE 8077	<u>BEPD</u> -
	PVF MISSIE 790	<u>WEPD</u> -
SSF BLACKCAP 2149	COLBURN PRIMO 5153	<u>YEPD</u> -
	SSF BISMARK STRUCTURE 5220	<u>MEPD</u> -

Bred to Conley Turning Point; due March 9, 2023.  
 This bred looks like someone sure could have been showing her. I love this female in her balance and structure. She has an incredible pedigree and will be a beautiful cow you will enjoy looking at for years.



**58A, B & C SSF ON POINT SEXED HEIFER**  
 Bull | +\*19272390 | Polled | Black | 04.02.2018

COLBURN PRIMO 5153	DAMERON FIRST CLASS	<u>BEPD</u> 4.0
	SILVEIRAS SARAS DREAM 1339	<u>WEPD</u> 55
PLUM CREEK ANNIE LU 4472	GAMBLES HOT ROD	<u>YEPD</u> 95
	S H MISS ANNIE LU 6087	<u>MEPD</u> 13

Selling 3 packages of 3 Units of SEXED HEIFER semen.

**59A, B & C SSF ON POINT**  
 Bull | +\*19272390 | Polled | Black | 04.02.2018

COLBURN PRIMO 5153	DAMERON FIRST CLASS	<u>BEPD</u> 4.0
	SILVEIRAS SARAS DREAM 1339	<u>WEPD</u> 55
PLUM CREEK ANNIE LU 4472	GAMBLES HOT ROD	<u>YEPD</u> 95
	S H MISS ANNIE LU 6087	<u>MEPD</u> 13

Selling 3 packages of 3 Units of Conventional semen.





# Family

